

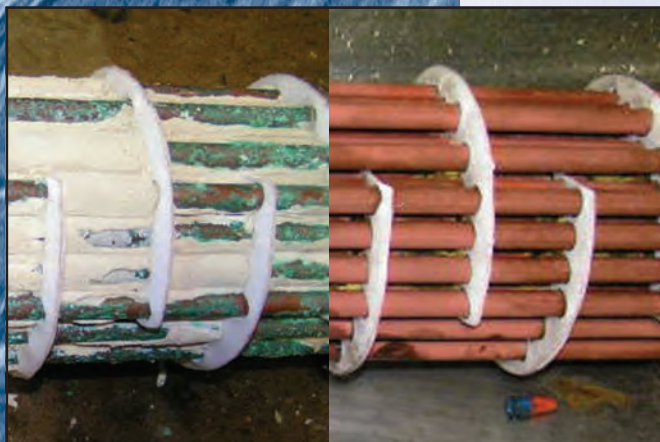
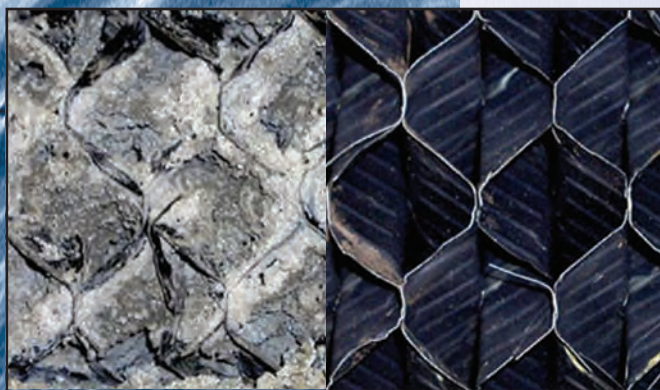
Manufactured Since 1942 by: Apex Engineering Products Corporation

# **RYDLYME**

*World's Leading Biodegradable Descaler*

## **The *RYDLYME* Story**

RYDLYME dissolves water scale, lime, mud and rust deposits safely, quickly and effectively!



*the solution to your  
water scale problems*



# Why You Should Use **RYDLYME**

Water scale, lime, mud and rust deposits are a serious problem for virtually all industries who use water as an integral part of their manufacturing and heating/cooling processes. Equipment or systems with clean water passages operate in a designed and effective manner. Once the water-based equipment or systems become fouled with scale, efficiency decreases, energy costs increase and the useful life of equipment is diminished. Failure to address water scale problems in a timely manner runs the serious risk of costly equipment or system shutdowns, repairs, or even replacement.



**RYDLYME**  
works quickly and  
efficiently  
to dissolve water  
scale, lime, mud  
and rust deposits

Fortunately, there is a solution! Periodic **RYDLYME** cleaning will dissolve these deposits into solution restoring efficiency, conserving energy, extending the equipment's useful life and reducing the risk of costly repairs, replacement or plant downtime. Arming your plant and personnel with **RYDLYME** as an integral part of your preventive or predictive maintenance program will provide you with a weapon that is easy to use, efficient and safe. **RYDLYME** cleaning allows equipment or systems to be cleaned without labor intensive dismantling or removal. Some systems can be cleaned on the run and without shut-down. **RYDLYME** cleaning can be performed by utilizing your own personnel, eliminating costly additional outside expenses. **RYDLYME** works quickly and efficiently, with most applications completely clean in a matter of hours. **RYDLYME** is safe enough to hold in your open hand, does not require any neutralizing or pacifying and is free rinsing with water. **RYDLYME** has a pleasant odor and does not exude any obnoxious or toxic vapors when dissolving water scale, lime, or rust deposits.

Only **RYDLYME** performs so SAFELY, SIMPLY, RAPIDLY and ECONOMICALLY!



**RYDLYME** has been thoroughly tested, approved, and is used extensively by the U.S. Navy. It has become an integral part of their maintenance programs onboard surface ships, submarines and aircraft carriers.

## SUMMARY

Now that you have learned what **RYDLYME** is all about, take a few minutes to think about how and why **RYDLYME** should be a part of your preventive maintenance program.

☐ **RYDLYME is Effective!**

It dissolves approximately 2 lbs. of lime per gallon!

☐ **RYDLYME is Non-Hazardous!**

It does not fall under any of the seven federally designated classes of hazardous waste!

☐ **RYDLYME is Biodegradable!**

It has a biochemical oxygen demand of 16 mg/l and can be disposed of through normal plant sewers!

☐ **RYDLYME is Safe!**

It can be held in the open hand without injury!

☐ **RYDLYME is Economical!**

Call us at 800-451-6291 to have us perform a **RYDLYME** Cost Savings Analysis of your next application!

☐ **RYDLYME is Approved!**

NSF/ANSI 60, NSF, U.S. Navy and many others!

## **RYDLYME is the Solution**

# What is **RYDLYME**® ?

**RYDLYME** is the trade name of our scientifically formulated descaler. **RYDLYME** is specifically designed to dissolve the toughest water scale, lime, mud and rust deposits from virtually any piece of water-based equipment. This powerful, yet totally safe, liquid descaler is non-toxic, non-injurious, non-flammable, non-hazardous, non-corrosive and **BIODEGRADABLE**; so **RYDLYME** will not harm your personnel, equipment or our environment!

***RYDLYME is the  
solution to your  
water scale problems!***

**RYDLYME** was developed in 1942 and has grown to be the product of choice for customers in nearly all industry categories. **RYDLYME** is an extremely innovative and unique solution fortified with wetting and penetrating agents to actually dissolve deposits into solution, like sugar in coffee. This revolutionary liquid is time tested and proven to be the safest and most cost effective solution for fouled equipment or systems. Thanks to our valued customers, **RYDLYME** is now the "World's Leading Biodegradable Descaler!"

**RYDLYME** has been tested (by EPA licensed testing facilities), and proven to be *biodegradable*, so disposal is not a problem. Even in concentrate (as received) form, it can be flushed down normal plant sewers. **RYDLYME** has accumulated numerous approvals and recommendations in over 65 years of use. **RYDLYME** is certified to NSF/ANSI 60 as a cleaner for drinking water systems and NSF registered for use in beverage, pharmaceutical, bottling, poultry and other food processing plants. Additionally, numerous OEM's recommend **RYDLYME** as the product for safe and effective use in their equipment.

Only **RYDLYME** does it so SAFELY, SIMPLY, RAPIDLY and ECONOMICALLY!



***RYDLYME is biodegradable  
and safe for your equipment,  
personnel and the environment!***

## **RYDLYME IS NON-CORROSIVE**

It will not erode, pit, oxidize or have other deleterious effects on metals or materials such as:

- |          |             |
|----------|-------------|
| • IRON   | • COPPER    |
| • FIBER  | • RUBBER    |
| • STEEL  | • PLASTIC   |
| • BRASS  | • CERAMIC   |
| • GLASS  | • TITANIUM  |
| • NICKEL | • STAINLESS |

Or other materials found in water-based equipment or systems.

# Who Uses **RYDLYME**?

The following is a brief list of customers, by industry, where **RYDLYME** has proven to be beneficial in maintaining their water based equipment or systems at peak efficiency.

## ■ **AUTOMOTIVE**

- Renault
- General Motors
- Chrysler Corporation
- Ford Motor Company
- Hyundai Motor America

**RYDLYME** used on closed circuit cooling, air compressors, heat exchangers, dynamometer test stands, extruders, molding machines, parts washers, electric welder guns.

## ■ **BEVERAGES**

- Anheuser-Busch
- Pepsi Cola Bottling
- Coors Brewing Company
- Miller Brewing Company

**RYDLYME** used in bottle washers, rinse tanks, heat exchangers, CO2 generators, refrigeration, booster heaters.

## ■ **CHEMICALS**

- Dow
- Sabic
- Bayer
- DuPont
- BASF Corporation

**RYDLYME** used for cleaning condensers, exchangers, mixers, reactors, jacketed kettles, vacuum pumps, dryers, extruders.

## ■ **FOOD**

- ADM
- Tyson
- Cargill
- Nestlé
- ConAgra
- Kraft Foods
- General Mills

**RYDLYME** used for low temperature refrigeration & process equipment, cooling towers & evaporative condensers, heat exchangers.

## ■ **HVAC**

- Trane Company
- Johnson Controls
- Carrier Corporation
- McQuay International

**RYDLYME** used on evaporative condensers, shell & tube condensers, centrifugal chillers, absorption units.

## ■ **MANUFACTURING**

- GE
- 3M
- AT&T
- Boeing
- Lockheed Martin
- S.C. Johnson & Son, Inc.

**RYDLYME** used on closed circuit cooling, vacuum filters, vacuum furnaces, heat exchangers, parts washers, chillers.

## ■ **MARINE**

- U.S. Navy
- Australian Navy
- U.S. Coast Guard

**RYDLYME** used on exchangers, condensers, engine cooling systems, CHT systems, evaporators, distilling units, boilers, jet blast deflectors (JBD's).

## ■ **PAPER**

- Georgia Pacific
- Domtar Industries
- International Paper
- Smurfit Stone Container
- Kimberly-Clark Corporation

**RYDLYME** used on vacuum pumps, mill & calendar rolls, liquor lines & tanks, closed circuit cooling, evaporators, air compressors, condensers.

## ■ **PHARMACEUTICALS**

- Pfizer, Inc.
- Eli Lilly & Company
- Merck & Company
- Abbott Laboratories

**RYDLYME** used on closed circuit cooling, heat exchangers, condensers, reactor vessels, vacuum pumps, stills, sterilizers.

## ■ **REFINERIES**

- BP
- Shell
- Pemex
- ExxonMobil
- Saudi Aramco
- ConocoPhillips

**RYDLYME** used on condensers, heat exchangers, crackers, converters, compressors, pumps, piping.

## ■ **RUBBER**

- Michelin
- Continental Tire
- Goodyear Tire & Rubber
- Bridgestone / Firestone, Inc.

**RYDLYME** used on Banbury mixers, extruders, tubers, mill & calendar rolls, compressors.

## ■ **STEEL & METALS**

- Alcoa
- AK Steel
- ArcelorMittal
- USX Corporation

**RYDLYME** used on compressors, exchangers, mill rolls, furnaces, smelters, cooling towers, motor coolers, cast house cooling, minimum spangle units.

## ■ **UTILITIES**

- AEP
- TVA
- Excelon
- Xcel Energy
- Duke Energy
- Southern Companies

**RYDLYME** used on exchangers, condensers, compressors, closed circuit cooling, cooling towers.

Proudly Made



1241 Shoreline Drive • Aurora, IL 60504  
630-820-8888 • 630-820-8886 fax  
800-451-6291 toll free

[www.rydlyme.com](http://www.rydlyme.com)

**RYDLYME** is registered in the United States  
Patent and Trademark Office.